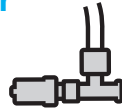


Set-Up Guide FloShield Air

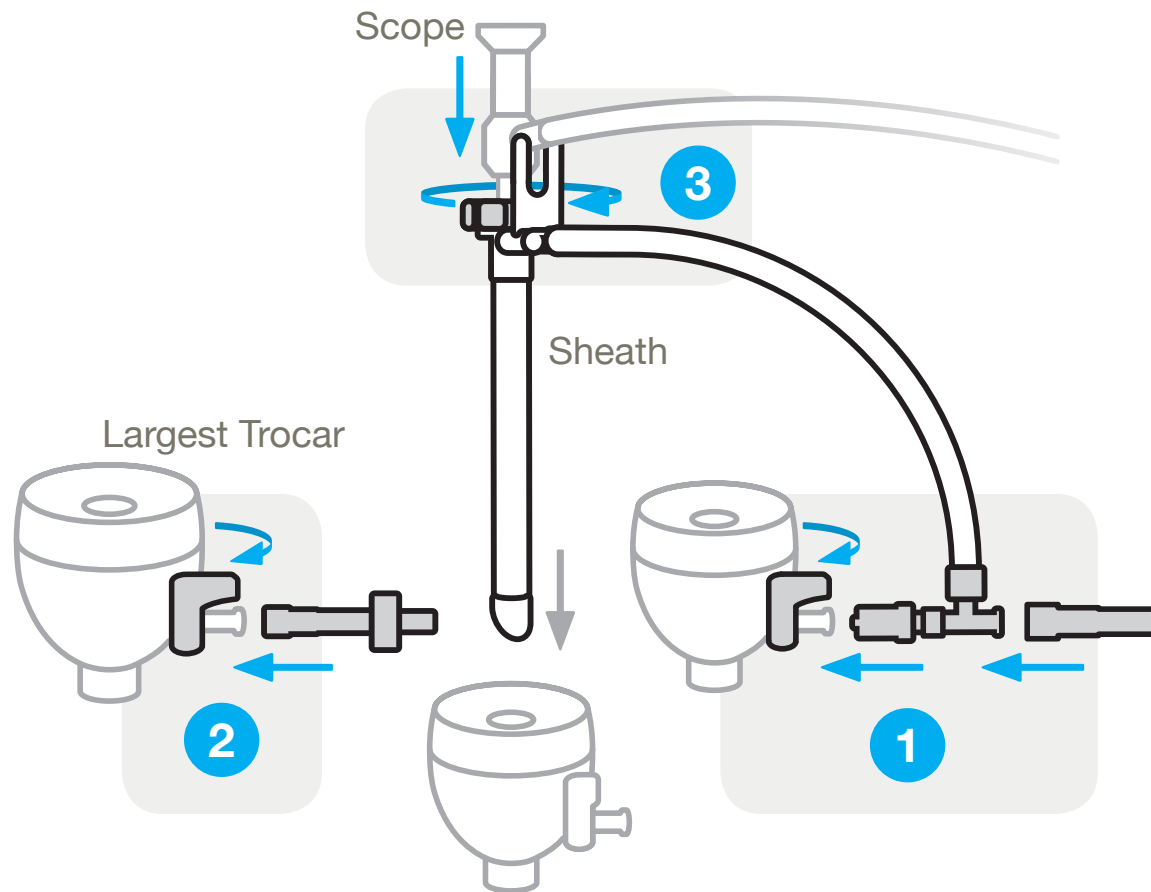
- 1 Attach **T-Connector** between trocar and insufflation tube. Open stopcock.



- 2 Attach **Trocar Vent** to largest trocar. Open stopcock.



- 3 Slide clean, dry scope into Sheath. Rotate **Locking Clamp** - finger tighten only.



Set-Up Guide

FloShield Air

Cleaning Guide

